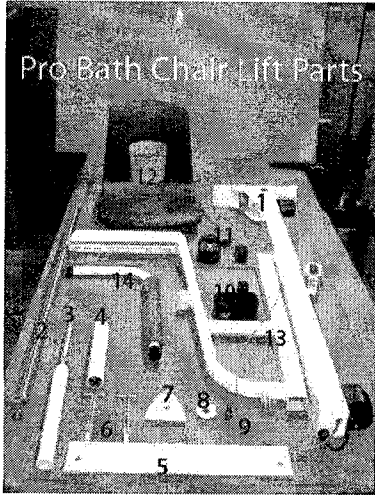




PRO BATH CHAIR LIFT® SET-UP GUIDE



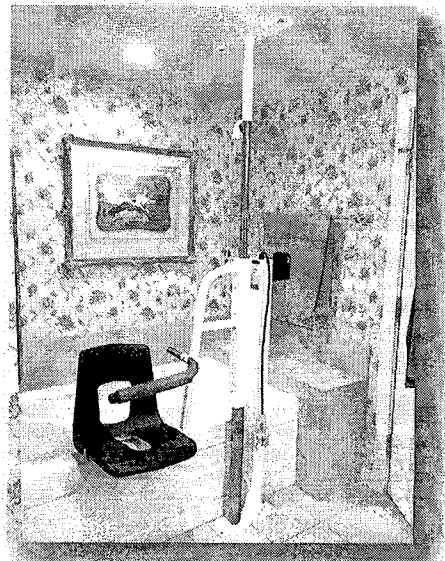
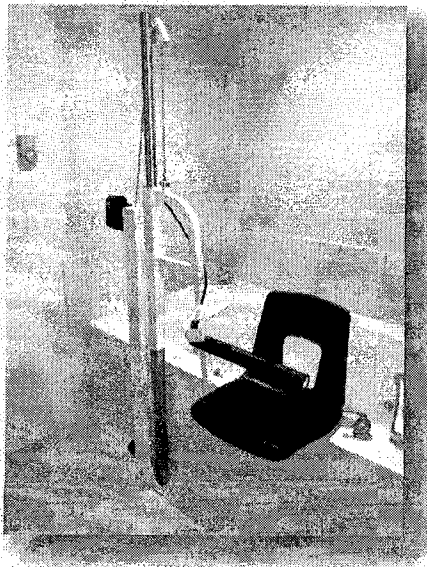
1. Power Lifter
2. Mast
3. Upper Mast Extension with Screw and Lock
4. Upper Mast Adjustment Beauty Cover
5. Upper Mast Head Plate
6. Two SNAPTOGGLE® Toggle Bolts for Head Plate
7. Mast Sheave Cover
8. Mast Sheave
9. Mast Sheave Shoulder Bolt
10. Battery
11. Battery Charger
- 12a. Peri-Care Chair or 12b. Standard Chair (see below)
13. Chair Slider
14. Chair Safety Bar

Tools You Will Need:

- Tape Measure
- 9/16" Open End Wrench
- 2 Allen Wrenches: 3/16" 5/16"
- Adjustable End Wrench up to 1 1/4"
- Hand Drill
- A 1/2" Bit
- Phillips Screwdriver
- Level

Time You Will Need:

- Approximately 90 Minutes To Install Lift
- Approximately 60 Minutes To Charge Battery



NOTE: Some installations may require rotating the toilet 45 degrees and refastening it to the floor to gain the space needed for proper operation of the Safe Bathtub Inc Pro Bath Chair Lift®



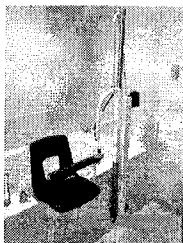
PRO BATH CHAIR LIFT SET UP GUIDE

***Note:** If you have a jacuzzi tub or a tub with a TALL tub wall, you will use an extended arm (14" or more); Rotate the foot of the mast 5 degrees; this allows the chair back to clear the tub wall on the outside of the tub, allowing it to be lowered nearly to the floor.

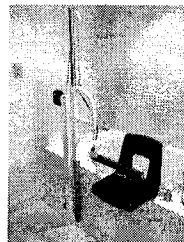
ASSEMBLE AND SET UP

1. Measure floor to ceiling & adjust the threaded mast extension to 1" less than the floor to ceiling height; slide on the cover shield.
2. Attach the chair to the slider with the 1/4"x 2" SS bolts & nuts provided - left or right as needed.

Left



Right



3. Install the mast into the chair slider with the mast sheave toward the tub. Place the mast head plate on top of the mast.
4. Set the power lifter parallel to the front wall of the tub, with the mast stud facing the tub drain. The mast should be at the high end of the tub floor.



5. Set the mast and chair slider on the mast base stud; the chair can rest on the tub wall.
6. Remove the mast sheave and guard, and replace it with the cable installed; TIGHTEN the sheave and attach the cable to the chair lift.
7. Extend the mast to touch the ceiling; install the battery; lift the chair into the tub; center the chair on the tub floor.
8. With a level, straighten the mast until it is perpendicular.
9. Check the chair to be sure it is centered in the tub.

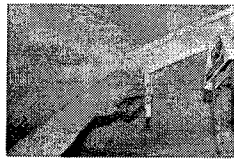


PRO BATH CHAIR LIFT® SET UP GUIDE

10. Extend the mast by hand until snug; further tighten 2 revolutions with a 1 1/4" wrench; tighten down the locking nut.



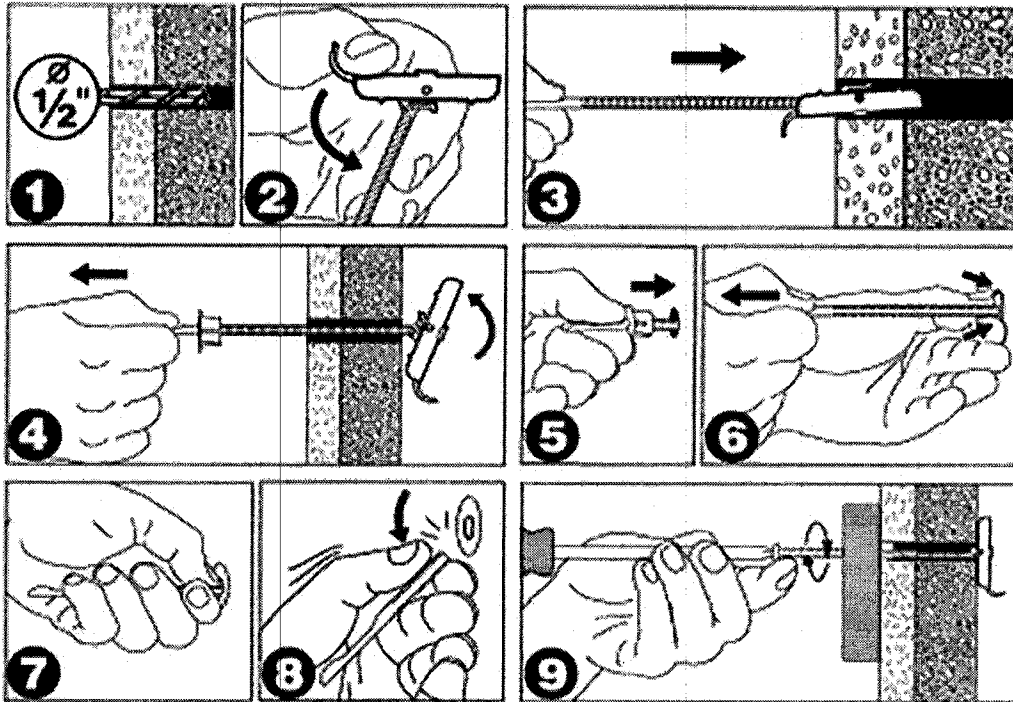
11. Drill two 1/2" holes through the holes in the mast head plate and install two heavy duty 3/16" *HEAVY DUTY FLIP TOGGLE BOLTS*



12. Install ^{Four} ~~two~~ stainless screws in the foot plate.

13. Install the safety bar, adjusted for the comfort of the user.

Installation Details For The TOGGLER®, FLIPTOGGLE® Bolts



Please direct any questions or inquiries to our Customer Service Department @ 1-800-729-6216